



■ 4-CHANNEL



■ 8-CHANNEL



■ 12-CHANNEL

SIMHUB SENSORY DEVICES

■ After connecting the USB, there will be a yellow light on inside

■ USB PORT



■ 12V POWER ADAPTER PORT

■ After connecting the 12V power supply, there will be a red light on inside

■ The drive box is fixed with two M5 screws, with installation holes spaced 95mm apart



■ Air outlet module

Two M5 screws are fixed, with installation holes spaced 105mm apart



■ Pedal vibration module

This is a reference style designed specifically for the pedal style used by the user



■ Frame vibration module

Two M6 screws are fixed, with installation holes spaced 128mm apart

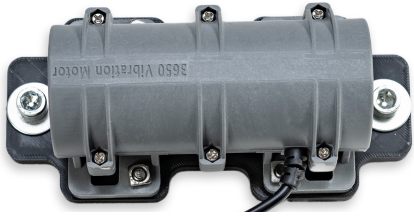
Step 1

Configuration and Wiring of Sensory Devices

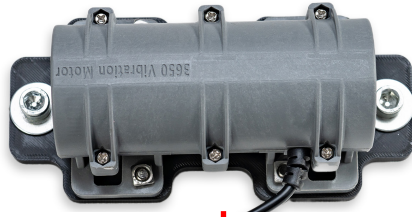
■ 12-CHANNEL
(reference)



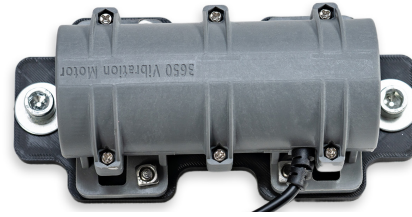
- 1 socket, left air outlet
- 2 sockets, brake pedal
- 3 sockets, right air outlet
- 4 sockets, gas pedal
- 5 sockets, left front frame
- 6 sockets, right front frame
- 7 sockets, left rear frame
- 8 sockets, right rear frame
- 9 sockets, clutch pedal
- 10 sockets, seats or other auxiliary vibrations
- 11 sockets, seats or other auxiliary vibrations
- 12 sockets, gear shift



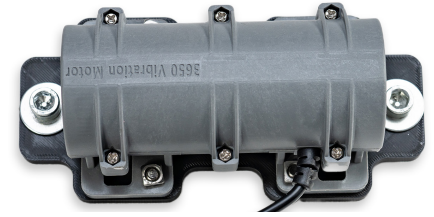
■ 5 sockets
left front frame



■ 6 sockets
right front frame



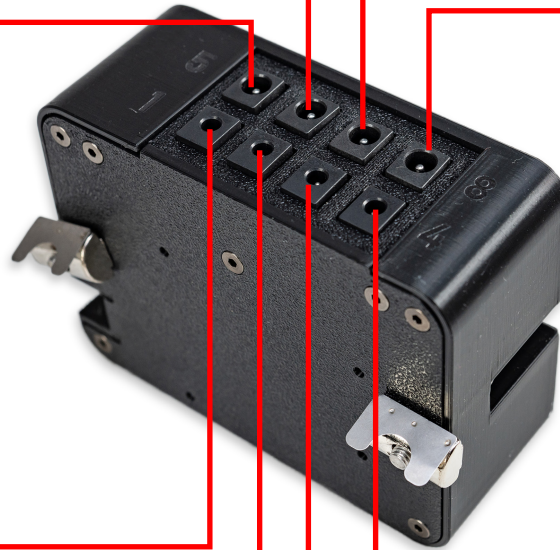
■ 7 sockets
left rear frame



■ 8 sockets
right rear frame

8-CHANNEL

■ Fan power consumption is high,
connect 1 and 3 channels
Balanced output power



■ 1 socket
left air outlet



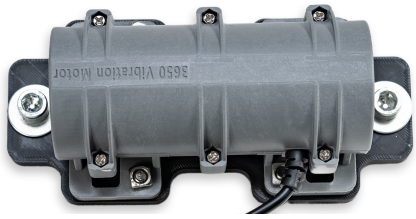
■ 2 sockets
brake pedal



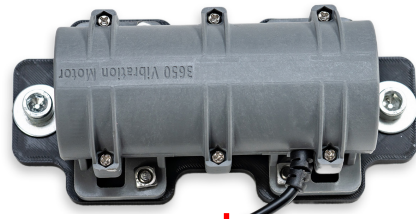
■ 3 sockets
right air outlet



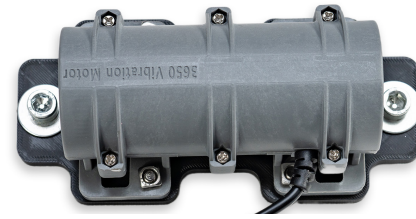
■ 4 sockets
gas pedal



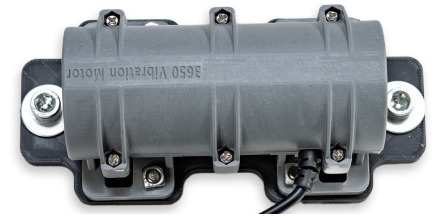
5 sockets
left front frame



6 sockets
right front frame

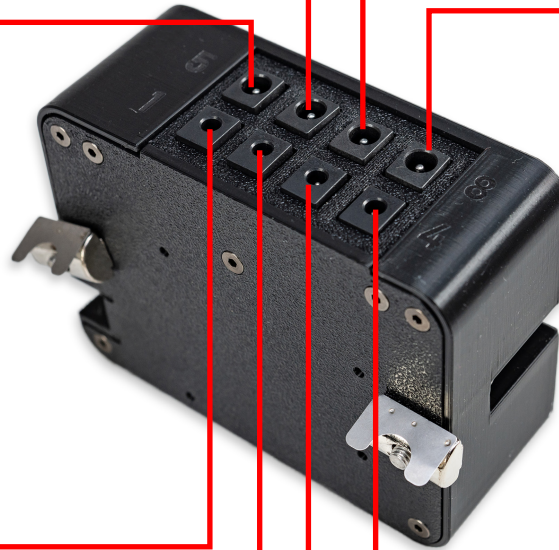


7 sockets
left rear frame



8 sockets
right rear frame

8-CHANNEL



1 socket
clutch pedal



2 sockets
brake pedal

Custom purpose

3 sockets



4 sockets
gas pedal

4-CHANNEL

- Fan power consumption is high, connect 1 and 3 channels
- Balanced output power



■ 1 socket
left air outlet



■ 2 sockets
brake pedal



■ 3 sockets
right air outlet



■ 4 sockets
gas pedal

4-CHANNEL

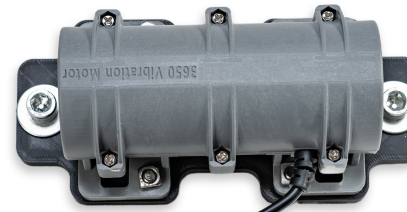
- Fan power consumption is high, connect 1 and 3 channels
- Balanced output power



■ 1 socket
left air outlet



■ 2 sockets
brake pedal



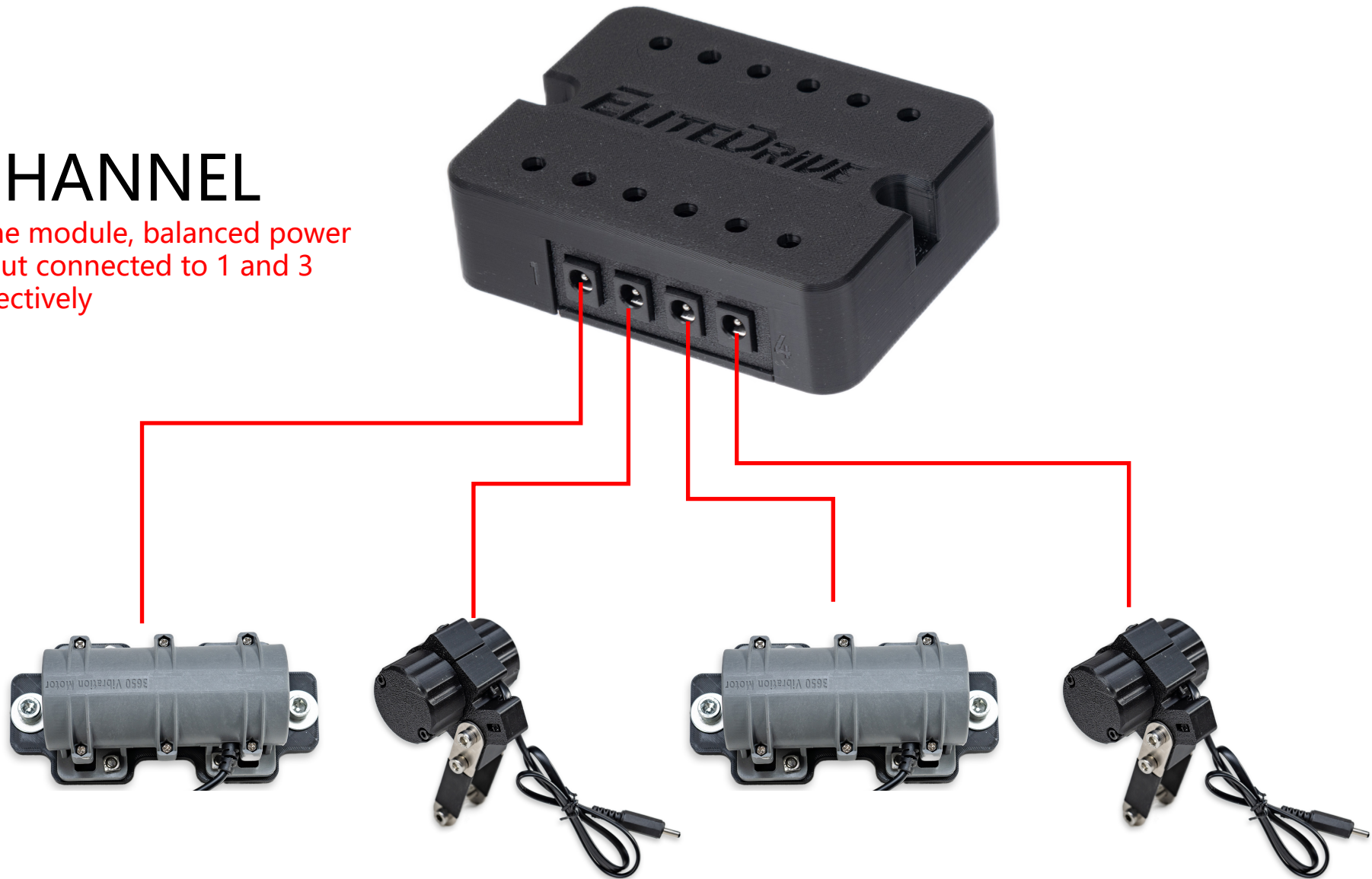
■ 3 sockets
Vibration in the middle of the seat



■ 4 sockets
gas pedal

4-CHANNEL

■ Frame module, balanced power output connected to 1 and 3 respectively



■ 1 socket
Left frame module

■ 2 sockets
brake pedal

■ 3 sockets
Right frame module

■ 4 sockets
gas pedal

4-CHANNEL

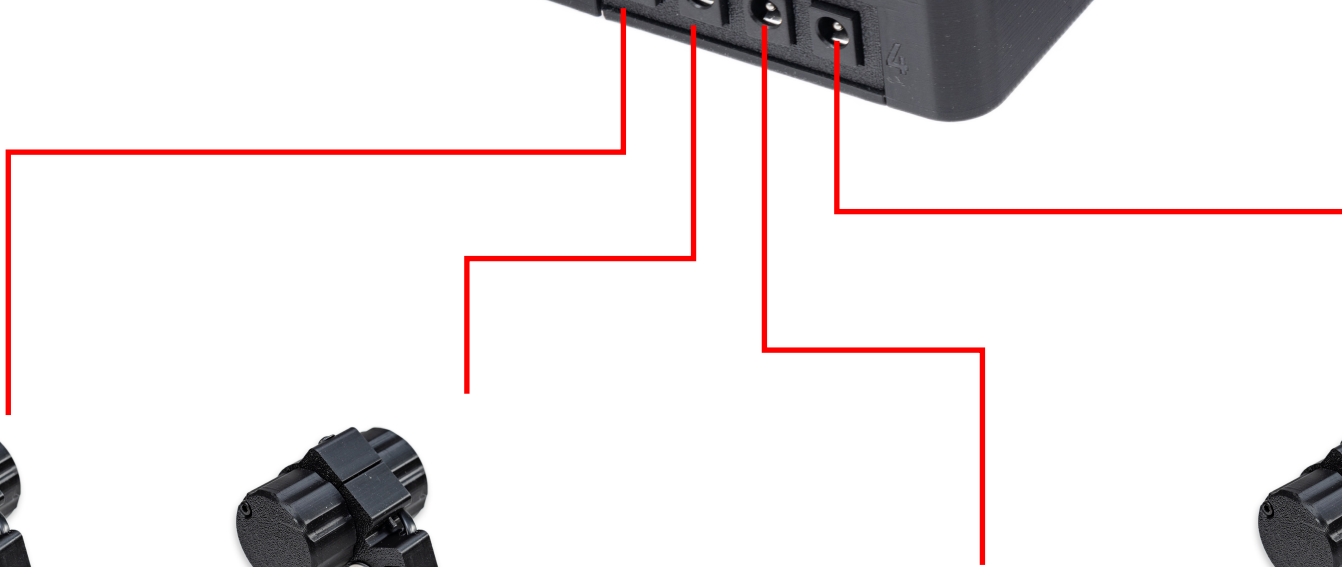
- Fan power consumption is high, connect 1 and 3 channels
- Balanced output power



- 1 socket left air outlet



- 3 sockets right air outlet



■ 1 socket
clutch pedal

■ 2 sockets
brake pedal

■ 3 sockets
Custom purpose

■ 4 sockets
gas pedal



Step 2

Install Simhub software

The image shows a browser window displaying the SimHub website. The browser's address bar shows the URL simhubdash.com. The website header features the SimHub logo and a navigation menu with links for Home, Download, Get a license, Motion, Help, and Contact. The main content area has a dark background with a grid pattern. On the left, a large white text block reads "Give life to your simulator!" followed by "SimHub extends your simulator to the real world: wheels, displays, haptics and many more." Below this text is a blue button with a download icon and the text "Download now". On the right, a screenshot of the SimHub software interface is shown. The interface is dark-themed and displays various settings for the game Assetto Corsa. It includes a sidebar menu with options like Dashboard, Car settings, Motion, Devices, Statistics, Dash Studio, Arduino, Shakerl Wind, Shakerl Bass Shakers, Shakerl Motors, Ambient lights, Control mapper, Controls and events, Available properties, and System log. The main area shows the "Motion" section with an "Enable motion" button and a "Disabled" status. Below that, there are sections for "My devices" (listing GSI Formula Pro Elite V2, Simagic GT Neo, and Archer Racing 4/5" Dashboard), "Feedback" (with sliders for Bass shakers, Motors, and Wind), and "My favorite simulators" (listing Assetto Corsa, American Truck Simulator, Assetto Corsa Competizione, Automobilista 2, BeamNG Drive, DIRT Rally 2.0, Codemasters F1 24, and EA WRC 23).

■ To <https://www.simhubdash.com> Download the latest version of Simhub software

SimHub - Euro Truck Simulator 2

Day Live Replay Record

Euro Truck Simulator 2

Change active game

Launch Game Game config.

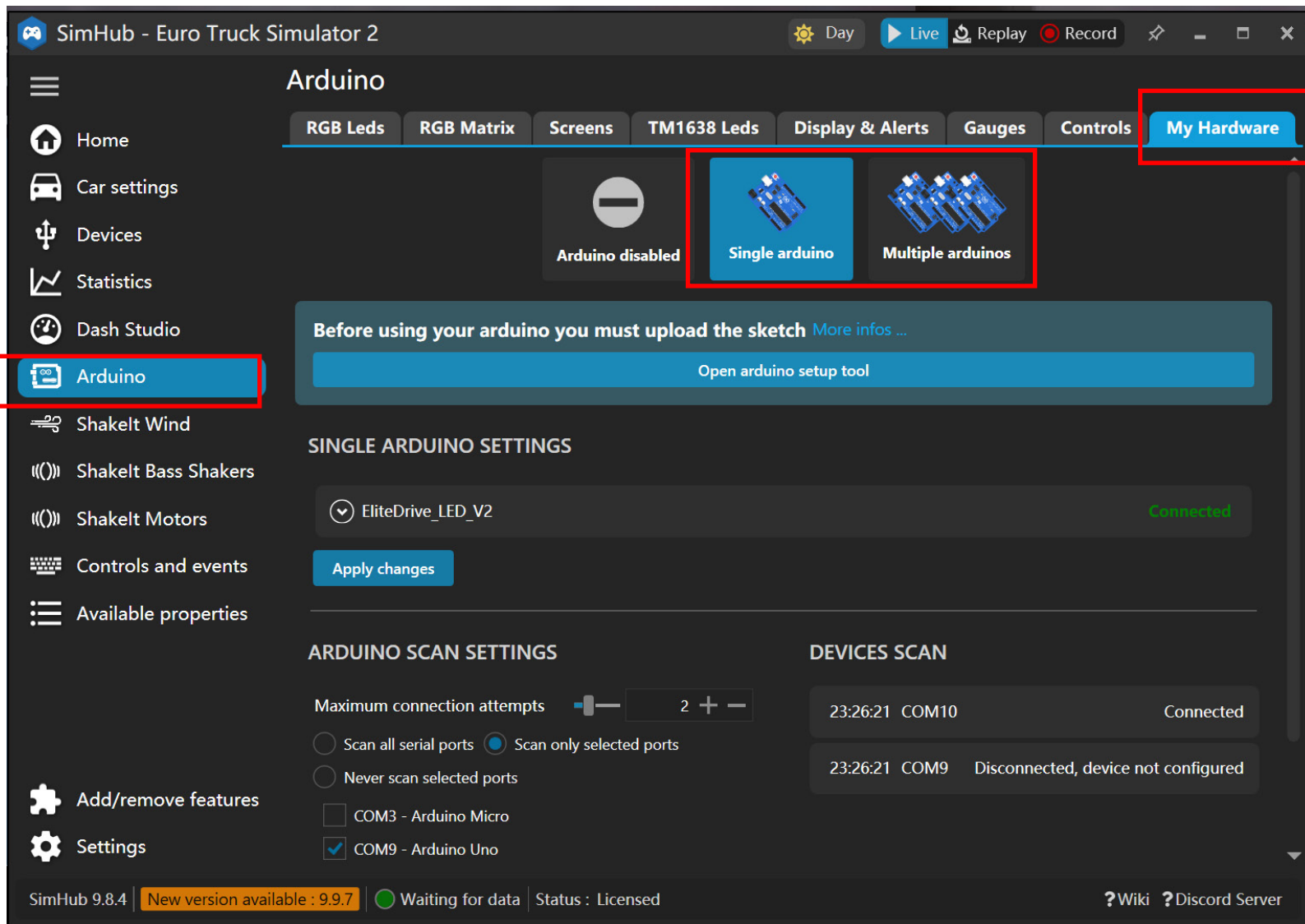
Waiting for data

- Home
- Car settings
- Devices
- Statistics
- Dash Studio
- Arduino
- Shakelt Wind
- Shakelt Bass Shakers
- Shakelt Motors
- Controls and events
- Available properties
- Add/remove features
- Settings

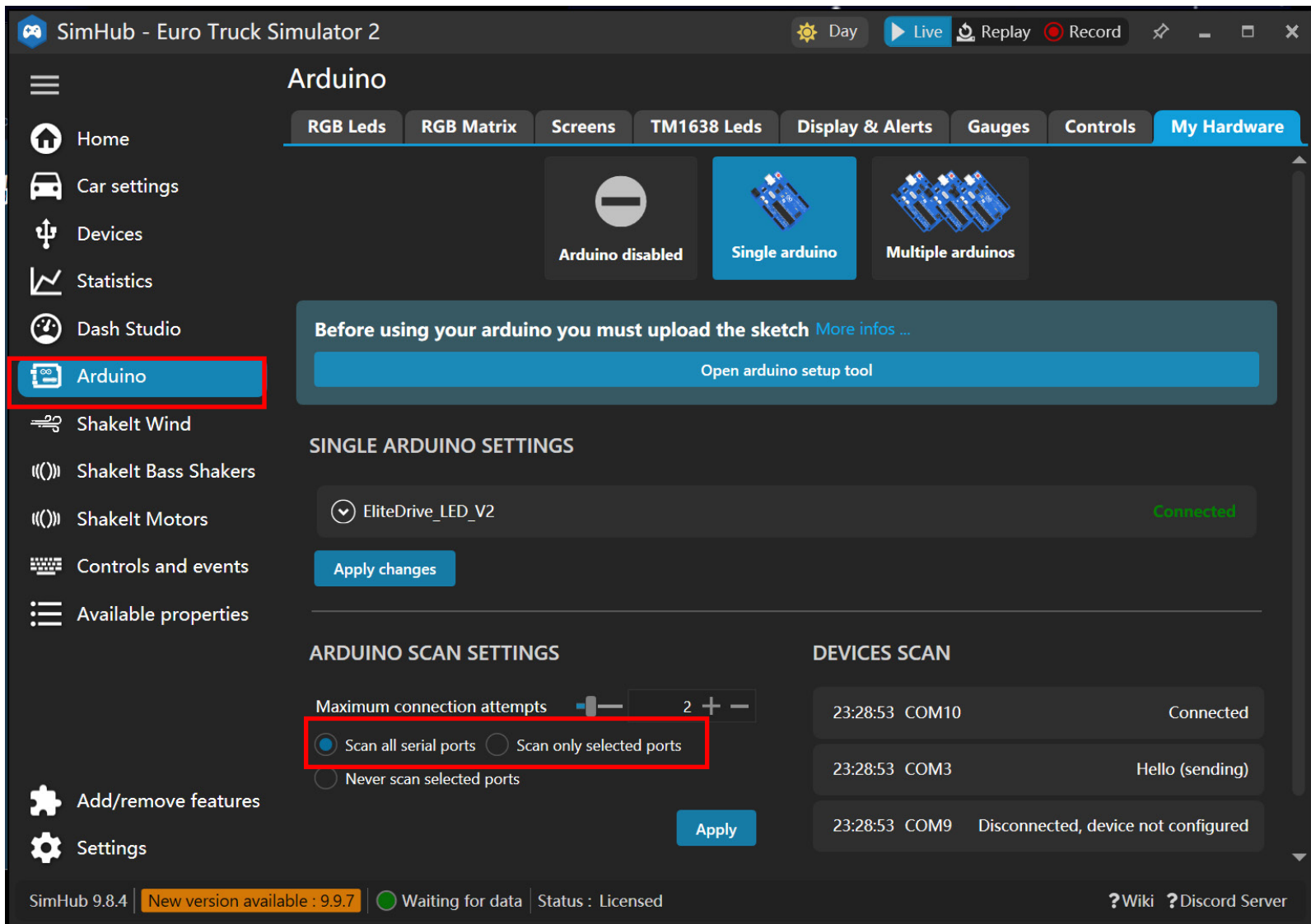
Condor 3	Copa Petrobras de Marcas	Counter-Strike 2
DCS World	Dota 2	Drift21 (rev 22438)
EA WRC	Epic Roller Coasters	Euro Truck Simulator 2
EXPANSIM	Farming Simulator 19	Farming Simulator 22

SimHub 9.8.4 | **New version available : 9.9.7** | Waiting for data | Status : Licensed

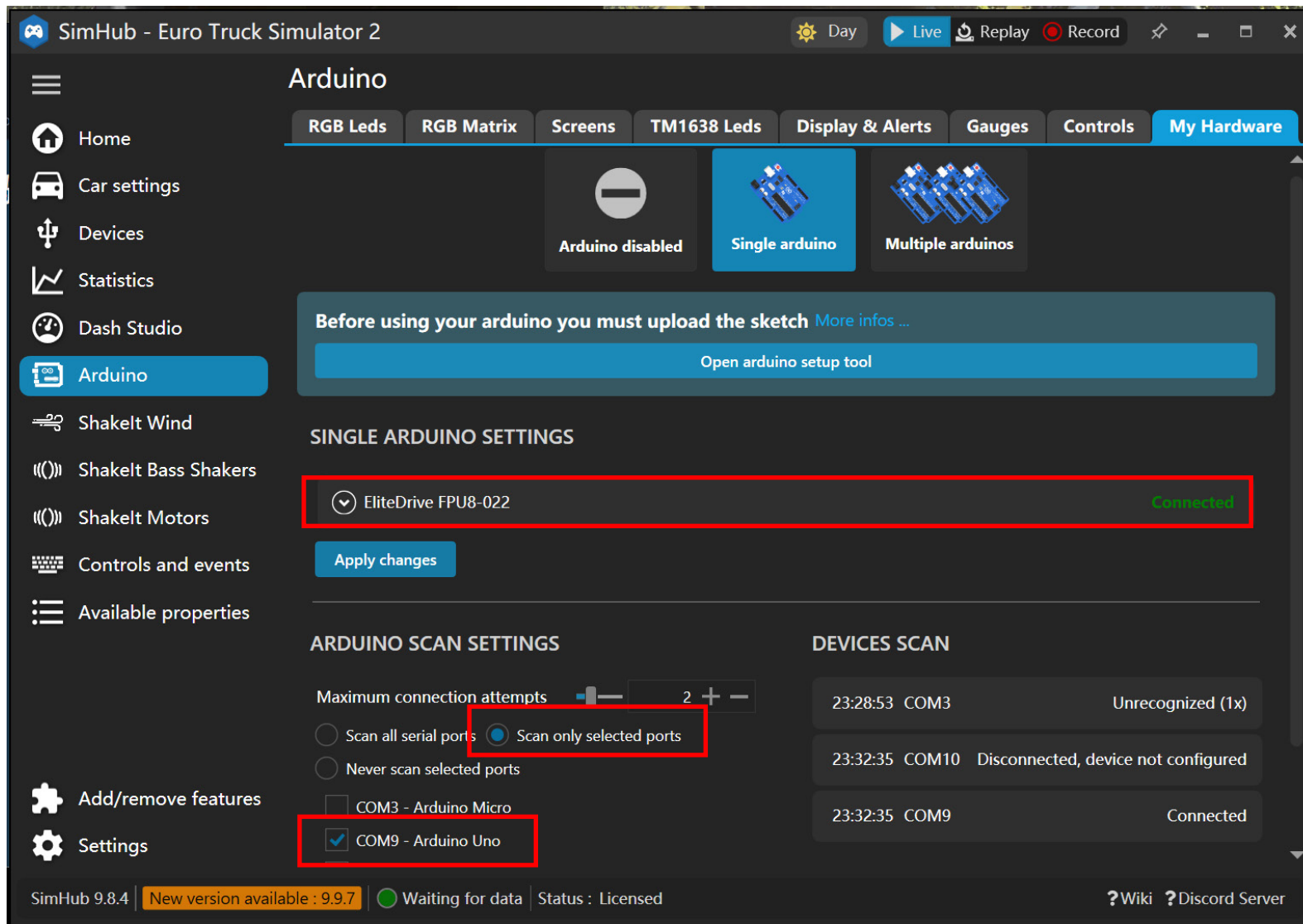
? Wiki ? Discord Server



- As shown in the figure, select your device mode and choose a single Arduino in the middle for a single Simhub device,
If you have multiple Simhub devices (instruments, branded peripherals, etc.),
choose multiple Arduino



- There are two scanning device methods:
The first method is to scan all COM, which is relatively simple and may associate with other devices or cause them to disconnect
The second type specifies the port, which is stable and prevents other COM devices from disconnecting.



- If the second method is used, select the corresponding COM device, and the control box will quickly connect with Simhub

SimHub - Euro Truck Simulator 2

Day Live Replay Record

Arduino

RGB Leds RGB Matrix Screens TM1638 Leds Display & Alerts Gauges Controls My Hardware

Arduino disabled Single arduino **Multiple arduinos**

Multiple usb will aggregate multiple arduinos as a single dash, make sure to review the multiple arduino settings below.

Before using your arduino you must upload the sketch [More infos ...](#)

Open arduino setup tool

MULTIPLE ARDUINO SETTINGS

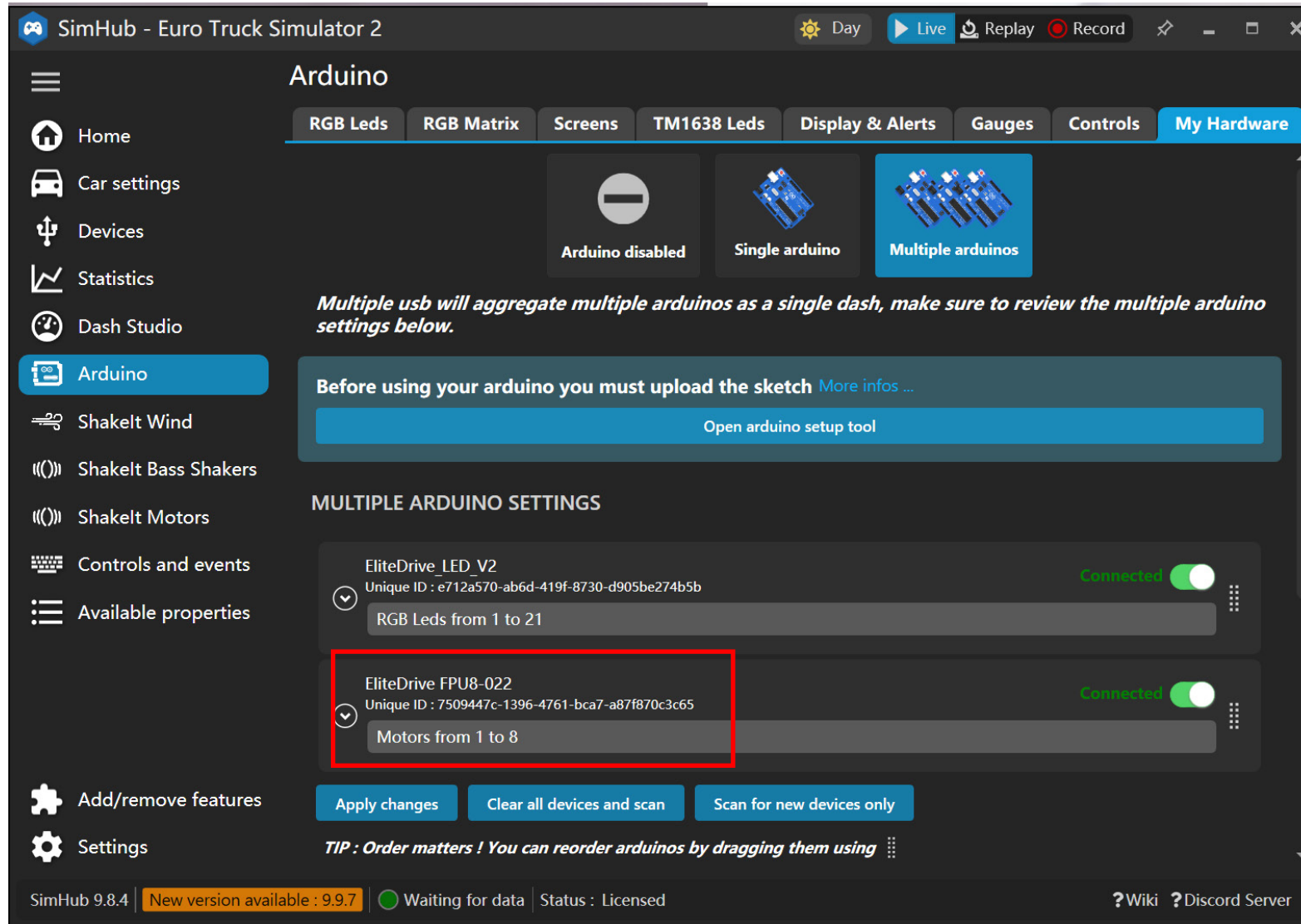
EliteDrive_LED_V2 Unique ID : e712a570-ab6d-419f-8730-d905be274b5b	Connected <input checked="" type="checkbox"/>	⋮
RGB Leds from 1 to 21		
EliteDrive FPU8-022 Unique ID : 7509447c-1396-4761-bca7-a87f870c3c65	Connected <input checked="" type="checkbox"/>	⋮
Motors from 1 to 8		

Apply changes Clear all devices and scan Scan for new devices only

TIP : Order matters ! You can reorder arduinos by dragging them using ⋮

SimHub 9.8.4 | New version available : 9.9.7 | ● Waiting for data | Status : Licensed | [? Wiki](#) | [? Discord Server](#)

- If you have multiple Arduino devices, choose multiple Arduino device modes and pay attention to distinguishing between devices and port numbers

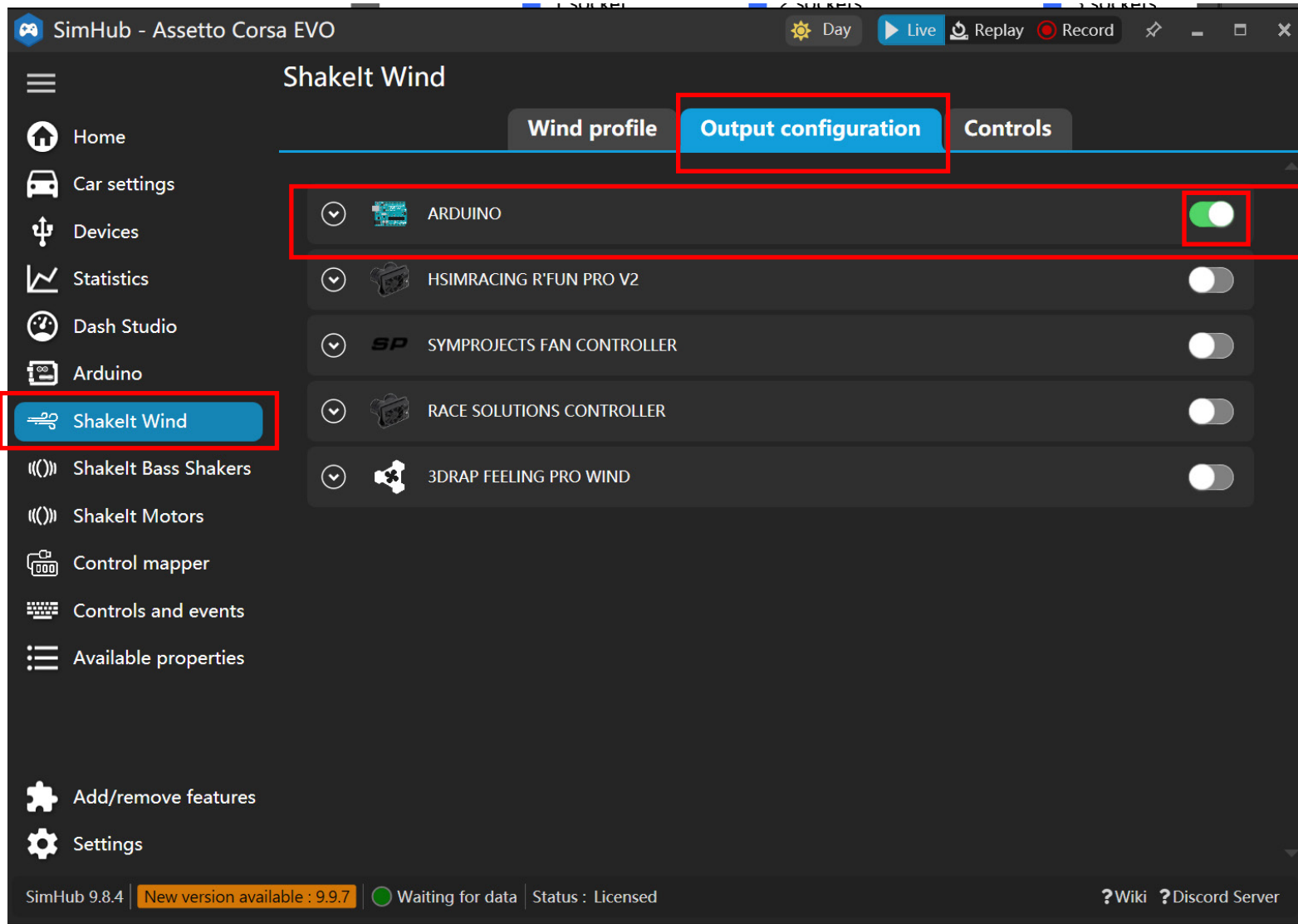


- Correctly wired, Simhub can display the connection to the motion sensing module as 'Connected'
If there are multiple devices, make sure it is "Motors from 1 to 8", our setup file is set based on this channel.
(12 channels are "1 to 12", 8 channels are "1 to 8", and 4 channels are "1 to 4")

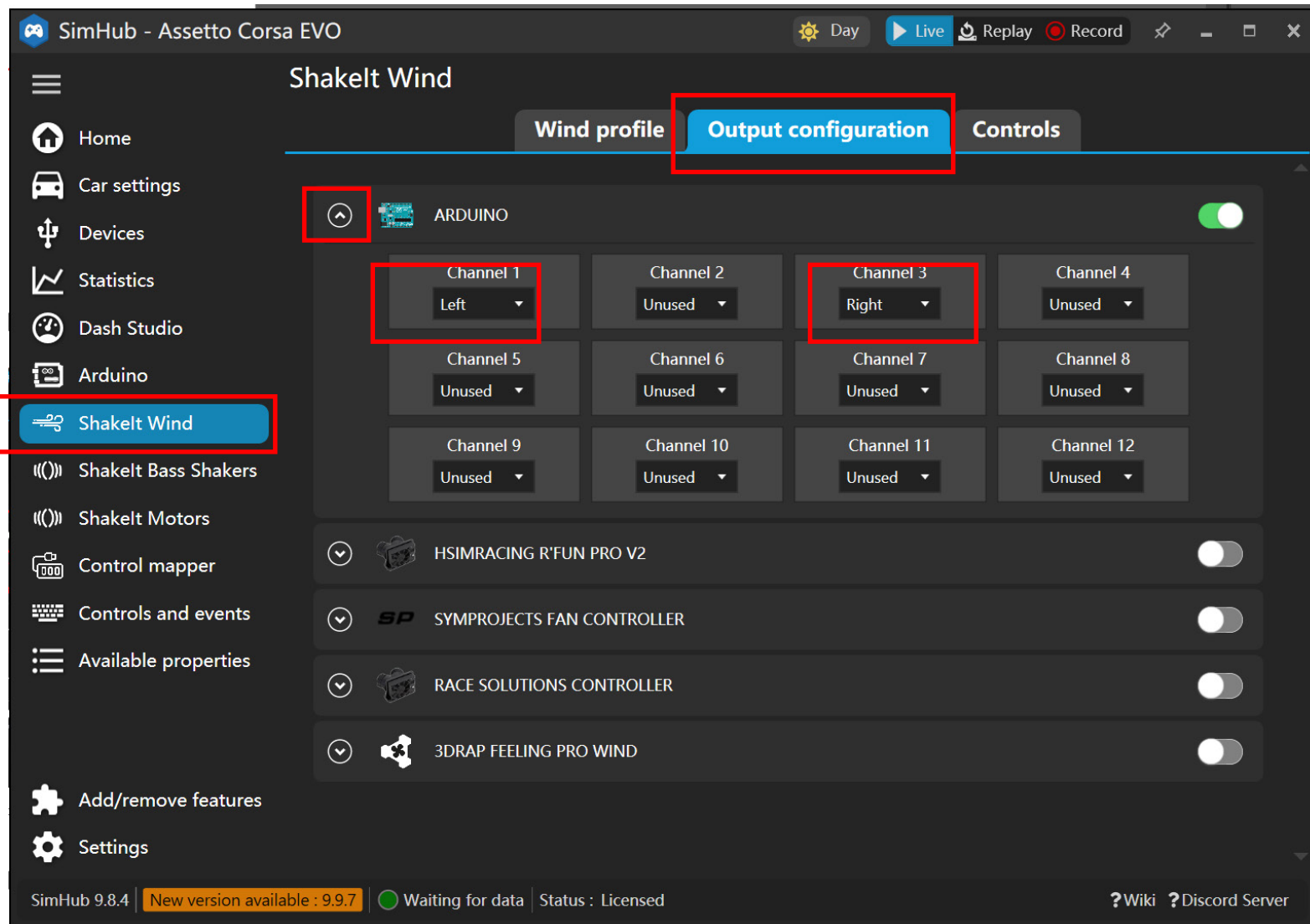
Step 3

Setting the air outlet

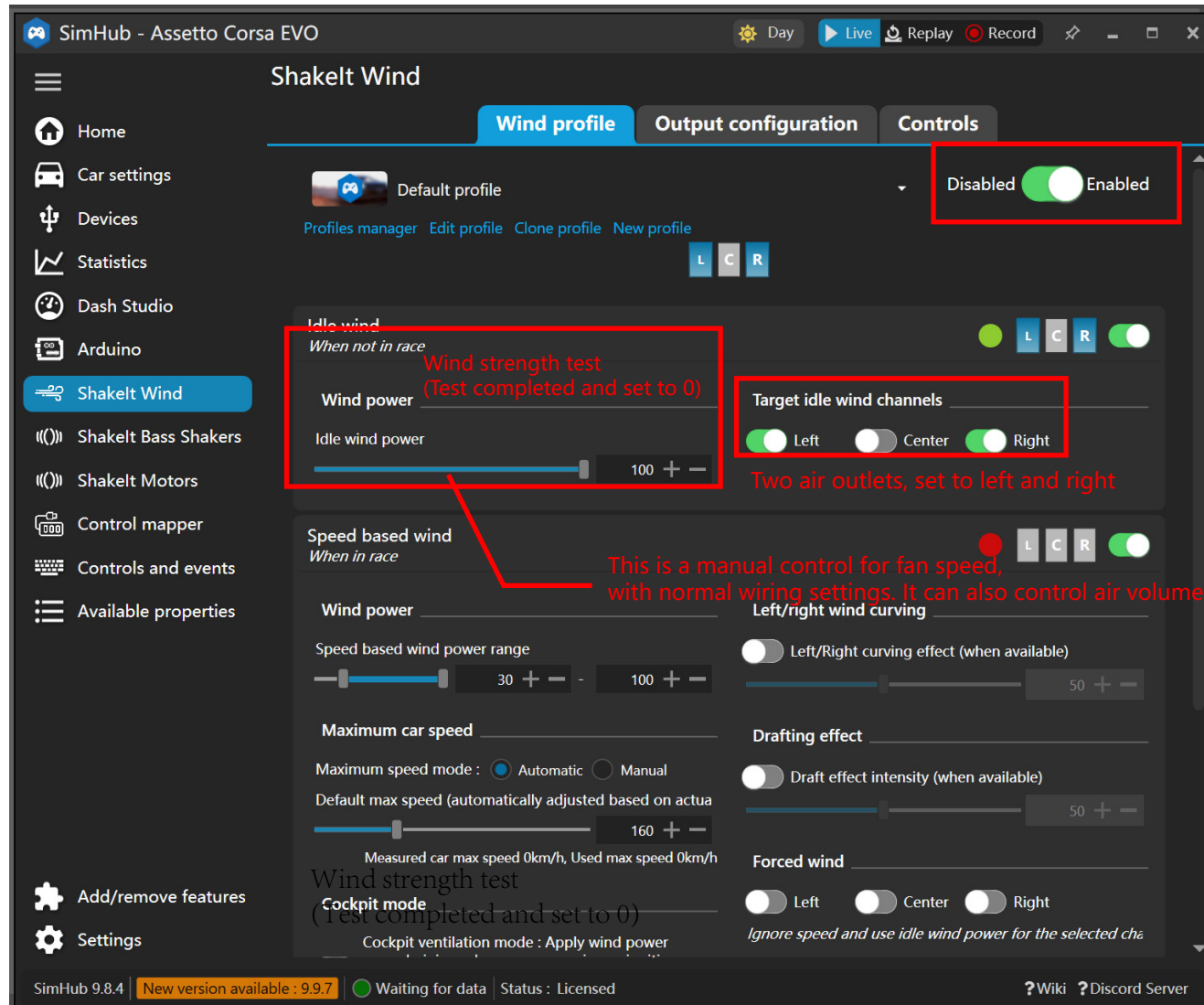
(If you have not purchased this module, please skip this section)



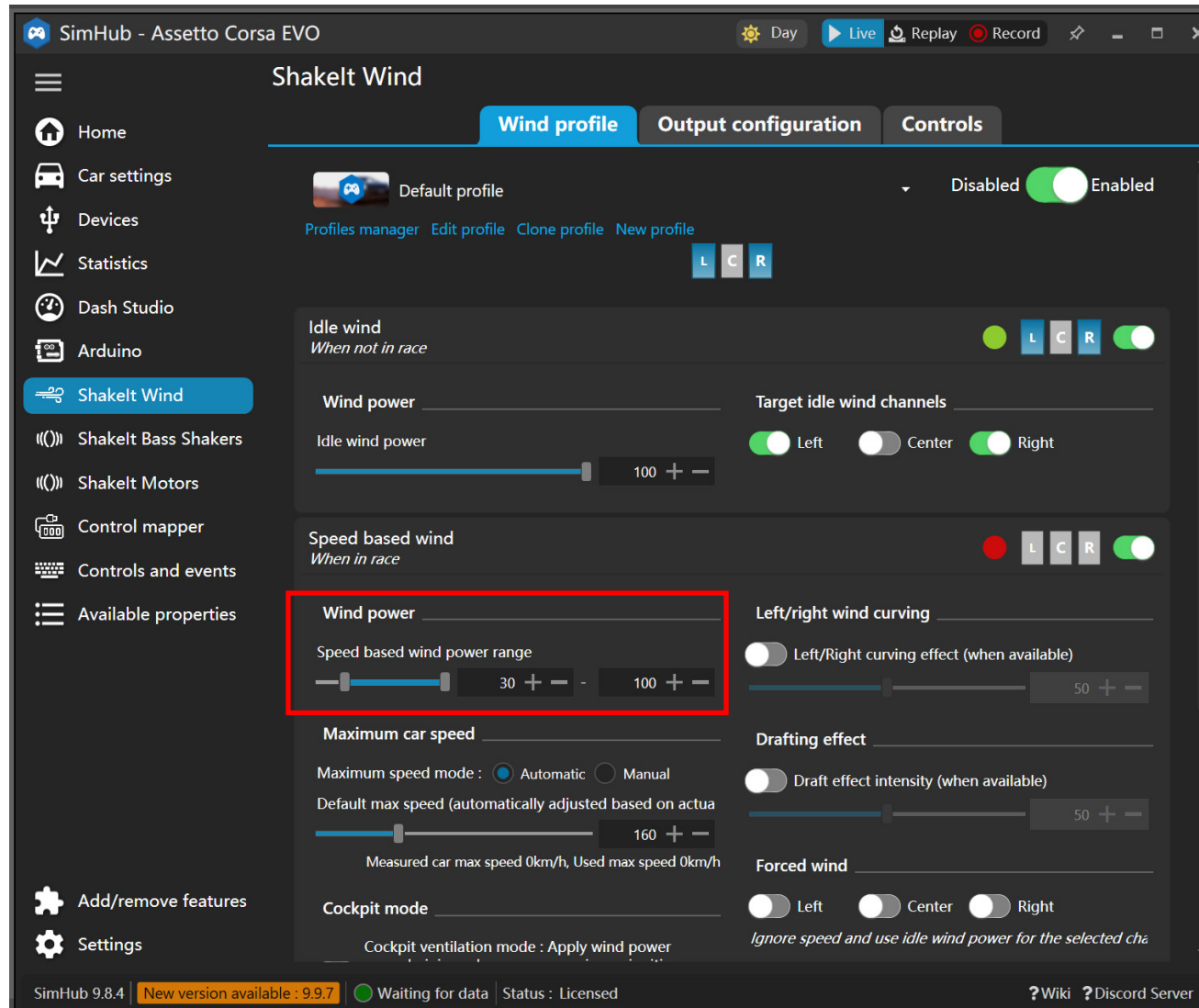
■ Set the air outlet here



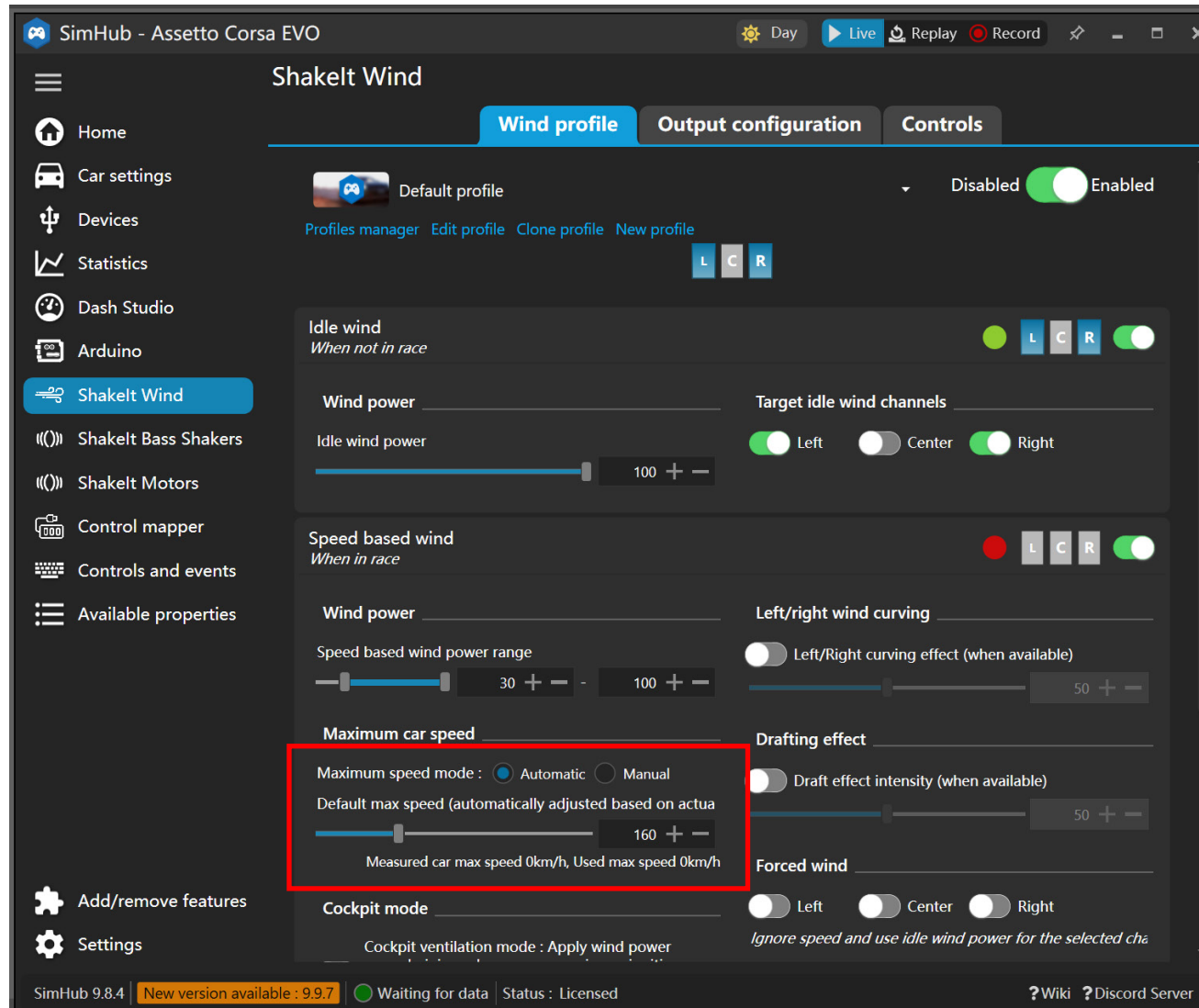
■ Here, channel 1 is defined as Left and channel 2 is defined as Right



- After completing the previous settings, the test can be conducted using idle air volume (In normal condition, the fan will start, otherwise check the wiring and settings)



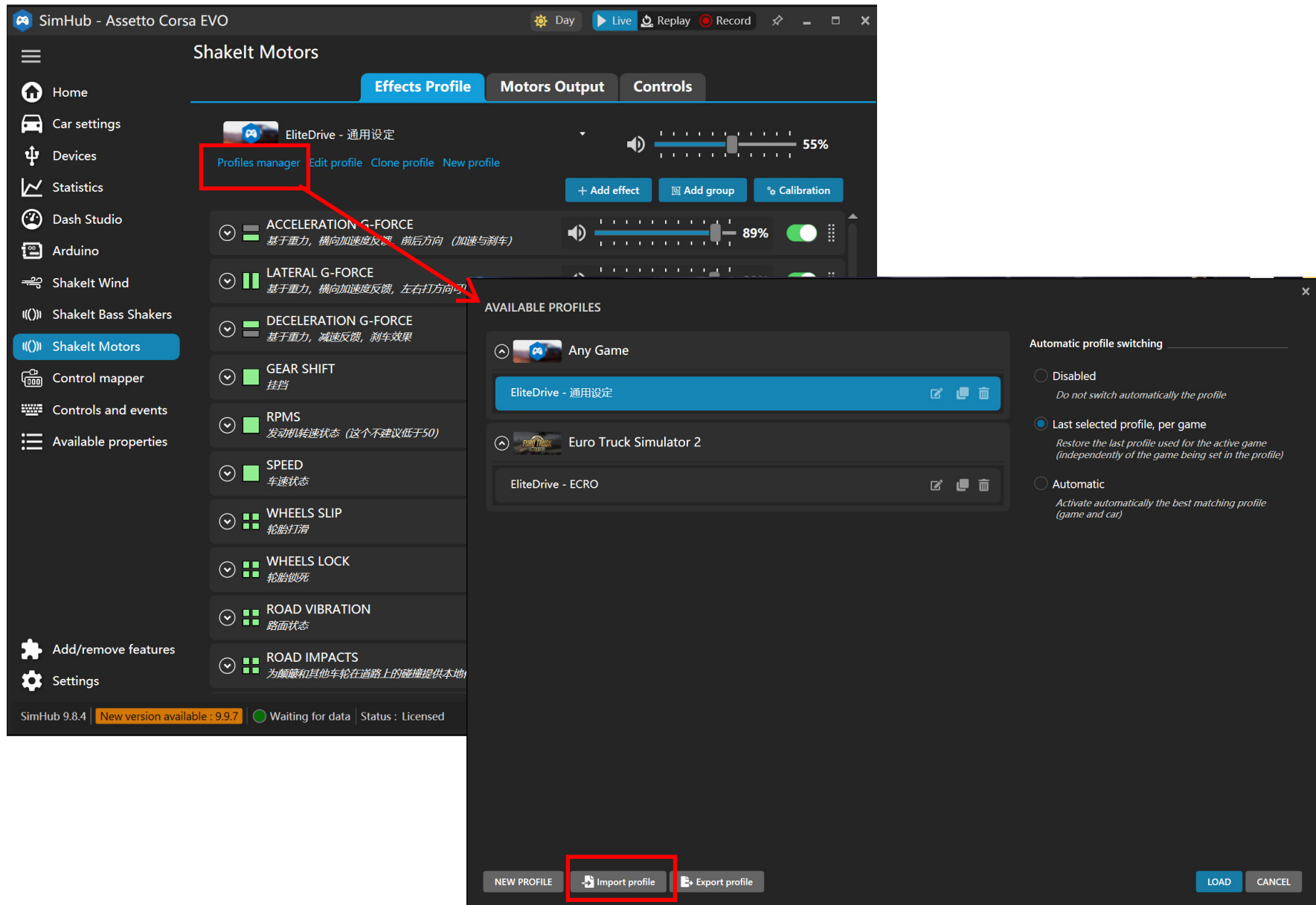
■ Wind power: "Wind speed range based on vehicle speed" refers to the variation of fan speed in response to vehicle speed!
It is recommended to set it between 40-100 instead of 0-100, as the fan speed is not a non-linear device. When the fan speed is in the low range, it will emit a whining current startup noise! So set at 40, the fan only starts turning when the vehicle speed reaches a stable range, and immediately enters a stable starting speed to avoid the starting noise generated by the low-speed poor working range of the fan!



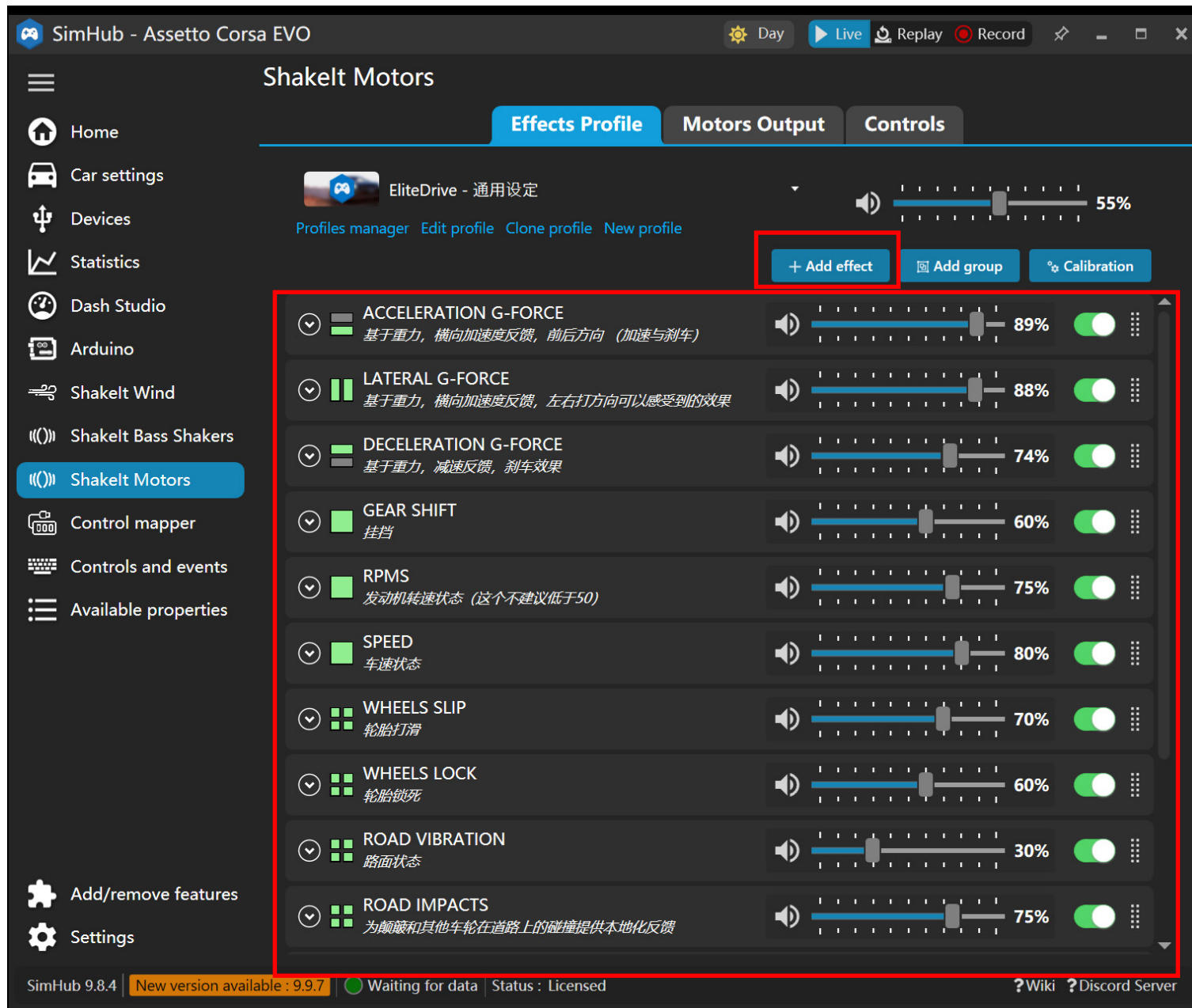
- The air outlet module can only provide a certain range of air volume, improving the driving experience. Its wind speed range cannot match the wind sensation of real vehicle speeds ranging from 0-300km/h. So, you need to allocate this limited wind range to the game. When the car reaches a speed of 160, the wind is at full speed

Step 4

Vibration Module Setting



■ Refer to the image steps to read the 'Effects Profile'



■ This is the effect function we have set, and you can also delete it as needed

SimHub - Assetto Corsa EVO

Shakelt Motors

Effects Profile **Motors Output** Controls

OUTPUT SELECTION

ARDUINO MOTORS AND FANS

Channels 1, 3 are already in use by wind plugin

Output tuning

Delete this sound output or change target sound output.

Show per effect gain

		通道1左风	通道2刹车踏板	通道右风	通道4油门踏板	通道5左前车架	通道6右前车架	通道7左后车架	通道8右后车架	通道9	通道10	通道11	通道12
ABS Active	All	OFF	ON	OFF	OFF	OFF	OFF	OFF	OFF	OFF	OFF	OFF	OFF
Acceleration G-Force	Rear	OFF	OFF	OFF	OFF	ON	ON	ON	ON	OFF	OFF	OFF	OFF
Deceleration G-Force	Front	OFF	OFF	OFF	OFF	ON	ON	ON	ON	OFF	OFF	OFF	OFF
Gear shift	All	OFF	ON	OFF	OFF	OFF	OFF	OFF	OFF	OFF	OFF	OFF	OFF
Lateral G-Force	Left	OFF	OFF	OFF	OFF	OFF	OFF	OFF	OFF	OFF	OFF	OFF	OFF
Lateral G-Force	Right	OFF	OFF	OFF	OFF	OFF	OFF	OFF	OFF	OFF	OFF	OFF	OFF
Road impacts		OFF	OFF	OFF	OFF	OFF	OFF	OFF	OFF	OFF	OFF	OFF	OFF

FANATEC PEDALS (USB ONLY)

FORCEFEEL PAD / NEXT LEVEL RACING HF8 H

CAMETRY PAD

SimHub 9.8.4 | New version available : 9.9.7 | Waiting for data | Status : Licensed

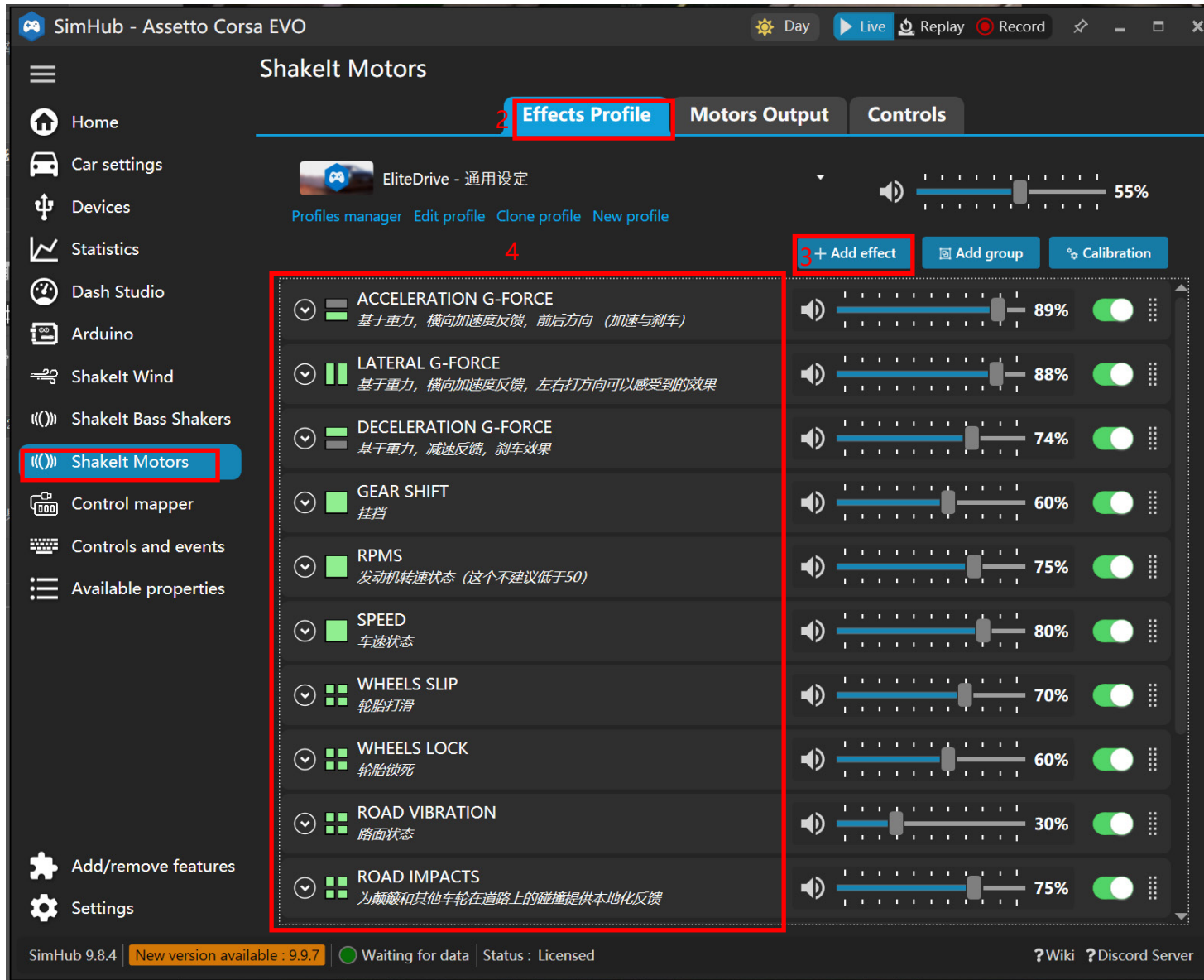
名称

名称	修改日期
4路电机设定 (1口离合_2口刹车_3口不接_4口油门) .sichannels	2025/5/17 2
4路电机设定 (1口左车架_2口刹车_3口右车架_4口油门) .sichannels	2025/5/17 2
4路电机设定 (1口左风_2口刹车_3口右风_4口油门) .sichannels	2025/5/17 2
4路电机设定 (1口左前车架_2口右前车架_3口左后车架_4口右后车架) .sichannels	2025/5/17 2
Arduino motors and fans.sichannels	2025/6/14 1

- Read in the corresponding motor configuration file (We have made corresponding Motors Output files for the regular hardware package and can read them accordingly)

To understand these two parts!

1. Effects Profile
2. Motors Output



- First, you need to add Effects, which are commonly used effects listed here. Not all games support these effects, Unsupported games, of course, do not have vibration function in this regard

SimHub - Assetto Corsa EVO

Day Live Replay Record

Shakelt Motors

Effects Profile Motors Output Controls

EliteDrive - 通用设定

Profiles manager Edit profile Clone profile New profile

+ Add effect Add group Calibration

Effect	Intensity (%)	Toggle
ACCELERATION G-FORCE 基于重力, 横向加速度反馈, 前后方向 (加速与刹车)	89%	On
LATERAL G-FORCE 基于重力, 横向加速度反馈, 左右打方向可以感受到的效果	88%	On
DECELERATION G-FORCE 基于重力, 减速反馈, 刹车效果	74%	On
GEAR SHIFT 挂档	60%	On
RPMS 发动机转速状态 (这个不建议低于50)	75%	On
SPEED 车速状态	80%	On
WHEELS SLIP 轮胎打滑	70%	On
WHEELS LOCK 轮胎锁死	60%	On
ROAD VIBRATION 路面状态	30%	On
ROAD IMPACTS 为颠簸和其他车轮在道路上的碰撞提供本地化反馈	75%	On

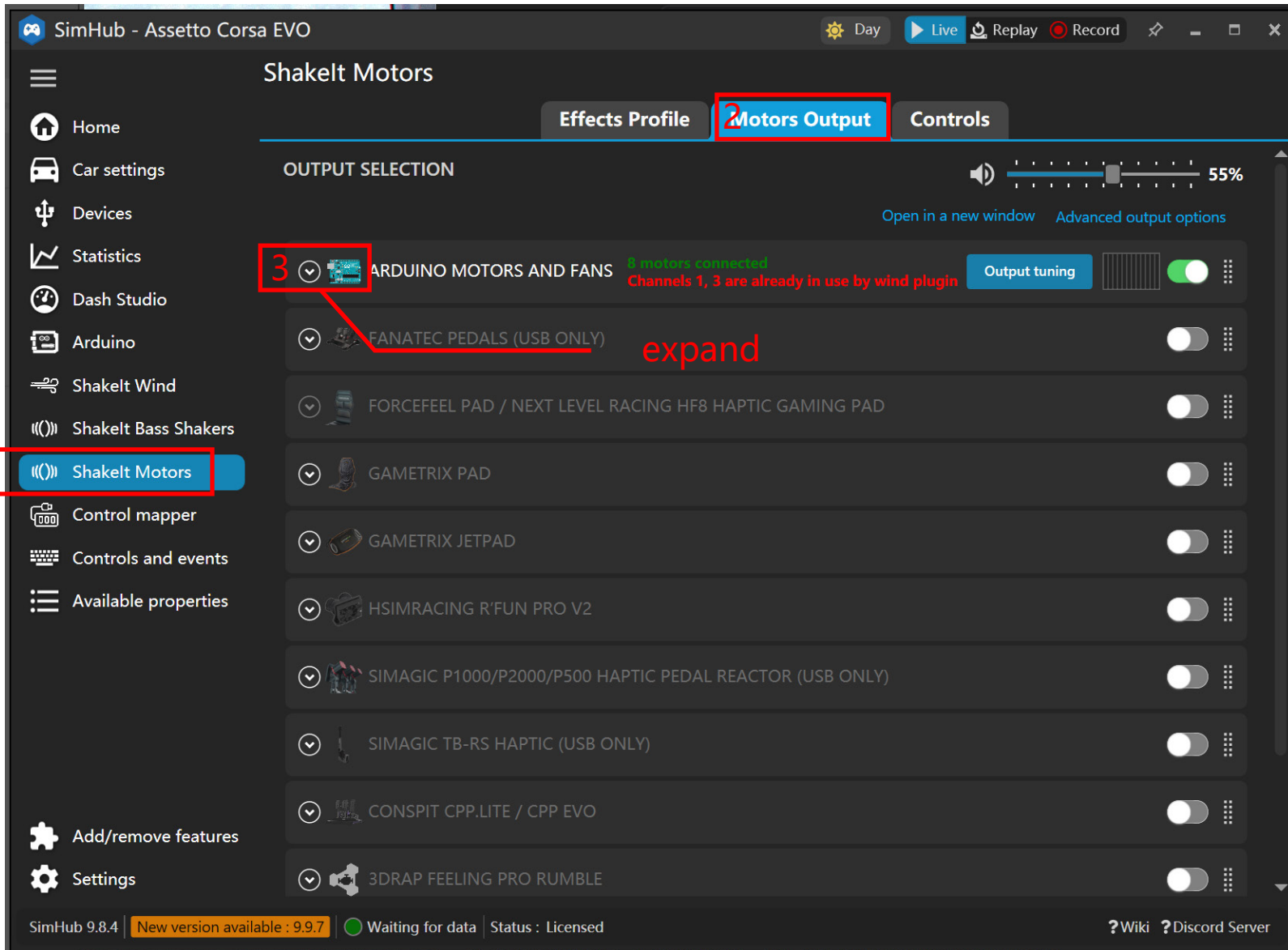
SimHub 9.8.4 New version available : 9.9.7 Waiting for data Status : Licensed

? Wiki ? Discord Server

Overall strength adjustment

Local intensity adjustment

- Each effect can be individually set in intensity and can be quickly turned on or off
- The effect needs to be fine tuned according to preferences, and don't add too many effects. The more effects there are, the harder it is to distinguish the state,
- Think about it, how many vibration units do you have? Will it be confusing to express too many effects simultaneously?
- So adding appropriate effects and adjusting harmony can enhance the driving experience



Effective results cannot work,
Next, you need to assign the effect to your Motors

SimHub - Assetto Corsa EVO

Day Live Replay Record

Shakelt Motors

Effects Profile **Motors Output** Controls

OUTPUT SELECTION

8 motors connected
Channels 1, 3 are already in use by wind plugin

Output tuning

55%

Open in a new window Advanced output options

ARDUINO MOTORS AND FANS

Delete this sound output or change target sound output.

Show per effect gain

		通道1左风	通道2刹车踏	通道右风	通道4油门踏	通道5左前车	通道6右前车	通道7左后车	通道8右后车	通道9	通道10	通道11	通道12
		Test now	Test now	Test now	Test now	Test now	Test now	Test now	Test now	Test now	Test now	Test now	Test now
ABS Active	All	OFF	ON	OFF	OFF	OFF	OFF	OFF	OFF	OFF	OFF	OFF	OFF
		- 100% +	- 60% +	- 100% +	- 60% +	- 100% +	- 100% +	- 100% +	- 100% +	- 100% +	- 100% +	- 100% +	- 100% +
Acceleration G-Force	Rear	OFF	OFF	OFF	OFF	ON	ON	ON	ON	OFF	OFF	OFF	OFF
						- 100% +	- 100% +	- 100% +	- 100% +				
Deceleration G-Force	Front	OFF	OFF	OFF	OFF	ON	ON	ON	ON	OFF	OFF	OFF	OFF
						- 100% +	- 100% +	- 100% +	- 100% +				
Gear shift	All	OFF	ON	OFF	ON	ON	ON	ON	ON	OFF	OFF	OFF	OFF
			- 100% +		- 100% +	- 20% +	- 20% +	- 20% +	- 20% +				
Lateral G-Force	Left	OFF	OFF	OFF	OFF	ON	OFF	ON	OFF	OFF	OFF	OFF	OFF
						- 60% +		- 60% +					
	Right	OFF	OFF	OFF	OFF	OFF	ON	OFF	ON	OFF	OFF	OFF	OFF
							- 100% +		- 100% +				
Road impacts		OFF	OFF	OFF	OFF	ON	OFF	OFF	OFF	OFF	OFF	OFF	OFF

FANATEC PEDALS (USB ONLY)

FORCEFEEL PAD / NEXT LEVEL RACING HF8 HAPTIC GAMING PAD

SimHub 9.8.4 New version available : 9.9.7 Waiting for data Status : Licensed

? Wiki ? Discord Server

Here are several effects you have added!

SimHub - Assetto Corsa EVO

Shakelt Motors

Effects Profile Motors Output Controls

OUTPUT SELECTION

ARDUINO MOTORS AND FANS

8 motors connected
Channels 1, 3 are already in use by wind plugin

Output tuning

Delete this sound output or change target sound output.

Show per effect gain
Reset Clear Export Import

		通道1左风 Test now - 100% +	通道2刹车踏 Test now - 60% +	通道右风 Test now - 100% +	通道4油门踏 Test now - 60% +	通道5左前车 Test now - 100% +	通道6右前车 Test now - 100% +	通道7左后车 Test now - 100% +	通道8右后车 Test now - 100% +	通道9 Test now - 100% +	通道10 Test now - 100% +	通道11 Test now - 100% +	通道12 Test now - 100% +
ABS Active	All	OFF	ON	OFF	OFF	OFF	OFF	OFF	OFF	OFF	OFF	OFF	OFF
			- 100% +										
Acceleration G-Force	Rear	OFF	OFF	OFF	OFF	ON	ON	ON	ON	OFF	OFF	OFF	OFF
						- 100% +	- 100% +	- 100% +	- 100% +				
Deceleration G-Force	Front	OFF	OFF	OFF	OFF	ON	ON	ON	ON	OFF	OFF	OFF	OFF
						- 100% +	- 100% +	- 100% +	- 100% +				
Gear shift	All	OFF	ON	OFF	ON	ON	ON	ON	ON	OFF	OFF	OFF	OFF
			- 100% +		- 100% +	- 20% +	- 20% +	- 20% +	- 20% +				
Lateral G-Force	Left	OFF	OFF	OFF	OFF	ON	OFF	ON	OFF	OFF	OFF	OFF	OFF
						- 60% +		- 60% +					
	Right	OFF	OFF	OFF	OFF	OFF	ON	OFF	ON	OFF	OFF	OFF	OFF
							- 100% +		- 100% +				
Road impacts		OFF	OFF	OFF	OFF	ON	OFF	OFF	OFF	OFF	OFF	OFF	OFF

FANATEC PEDALS (USING SIMHUB)

FORCEFEEL PAD / NEXT LEVEL CONNECTION

SimHub 9.8.4 | New version available : 9.9.7 | Waiting for data | Status : Licensed

? Wiki ? Discord Server

SIMHUB supports 12 channels,
You specify the effect to the desired channel!
You need to understand which channel your vibration module is connected to!

The vibration intensity of each channel ranges from 0 to 200

Shakelt Motors

Effects Profile **Motors Output** Controls

OUTPUT SELECTION

8 motors connected
Channels 1, 3 are already in use by wind plugin

ARDUINO MOTORS AND FANS

Delete this sound output or change target sound output.

Show per effect gain
Reset Clear Export Import

		通道1左风	通道2刹车蹄	通道右风	通道4油门踏板	通道5左前车	通道6右前车	通道7左后车	通道8右后车	通道9	通道10	通道11	通道12
		Test now	Test now	Test now	Test now	Test now	Test now	Test now	Test now	Test now	Test now	Test now	Test now
		- 100% +	- 60% +	- 100% +	- 60% +	- 100% +	- 100% +	- 100% +	- 100% +	- 100% +	- 100% +	- 100% +	- 100% +
ABS Active	All	OFF	ON	OFF	OFF	OFF	OFF	OFF	OFF	OFF	OFF	OFF	OFF
			- 100% +										
Acceleration G-Force	Rear	OFF	OFF	OFF	OFF	ON	ON	ON	ON	OFF	OFF	OFF	OFF
						- 100% +	- 100% +	- 100% +	- 100% +				
Deceleration G-Force	Front	OFF	OFF	OFF	OFF	ON	ON	ON	ON	OFF	OFF	OFF	OFF
						- 100% +	- 100% +	- 100% +	- 100% +				
Gear shift	All	OFF	ON	OFF	ON	ON	ON	ON	ON	OFF	OFF	OFF	OFF
			- 100% +		- 100% +	- 20% +	- 20% +	- 20% +	- 20% +				
Lateral G-Force	Left	OFF	OFF	OFF	OFF	ON	OFF	ON	OFF	OFF	OFF	OFF	OFF
						- 60% +		- 60% +					
	Right	OFF	OFF	OFF	OFF	OFF	ON	OFF	ON	OFF	OFF	OFF	OFF
							- 100% +		- 100% +				
Road impacts		OFF	OFF	OFF	OFF	ON	OFF	OFF	OFF	OFF	OFF	OFF	OFF

FANATEC PEDALS (USB ONLY)

FORCEFEEL PAD / NEXT LEVEL RACING HF8 HAPTIC GAMING PAD

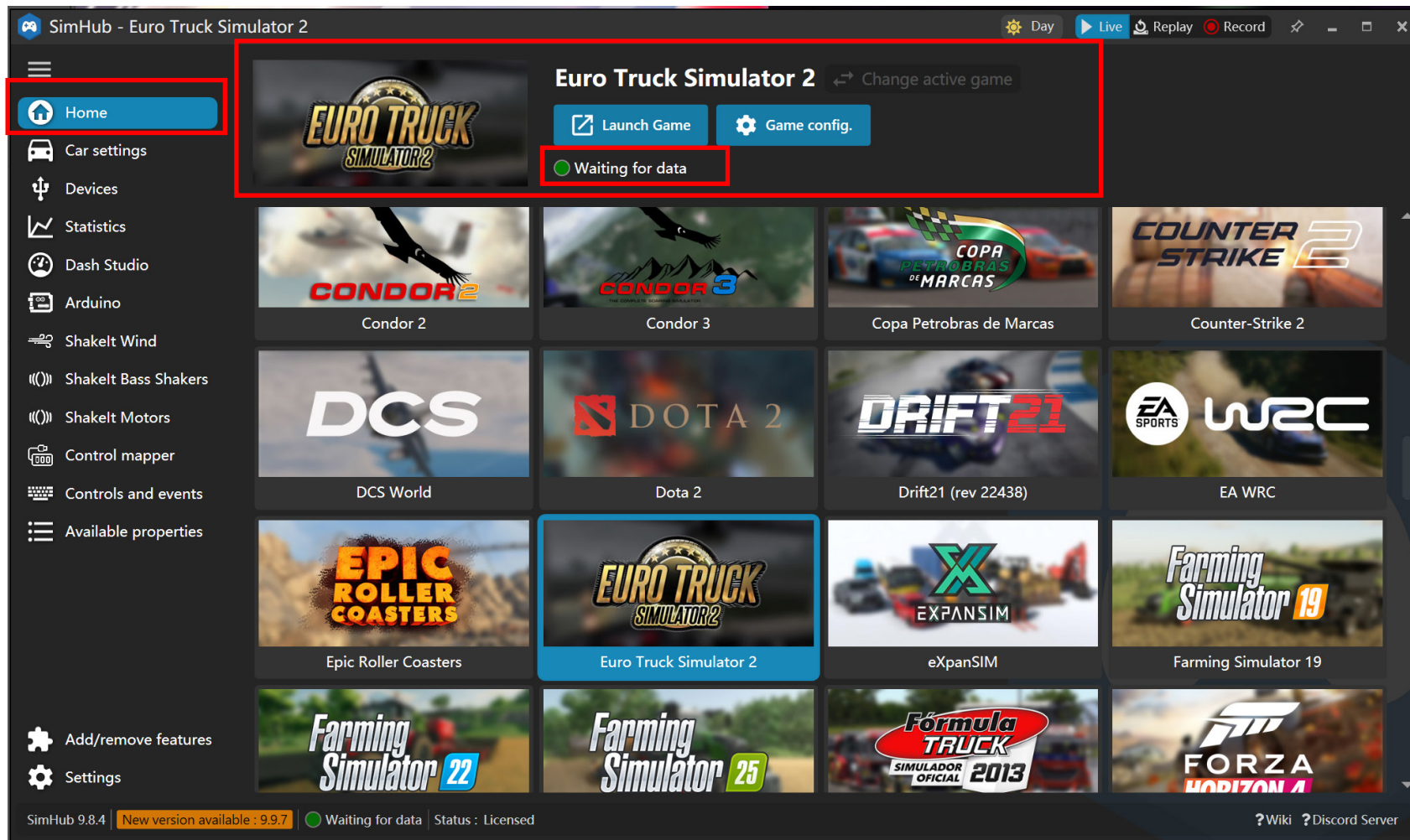
SimHub 9.8.4 | New version available : 9.9.7 | Waiting for data | Status : Licensed

? Wiki ? Discord Server

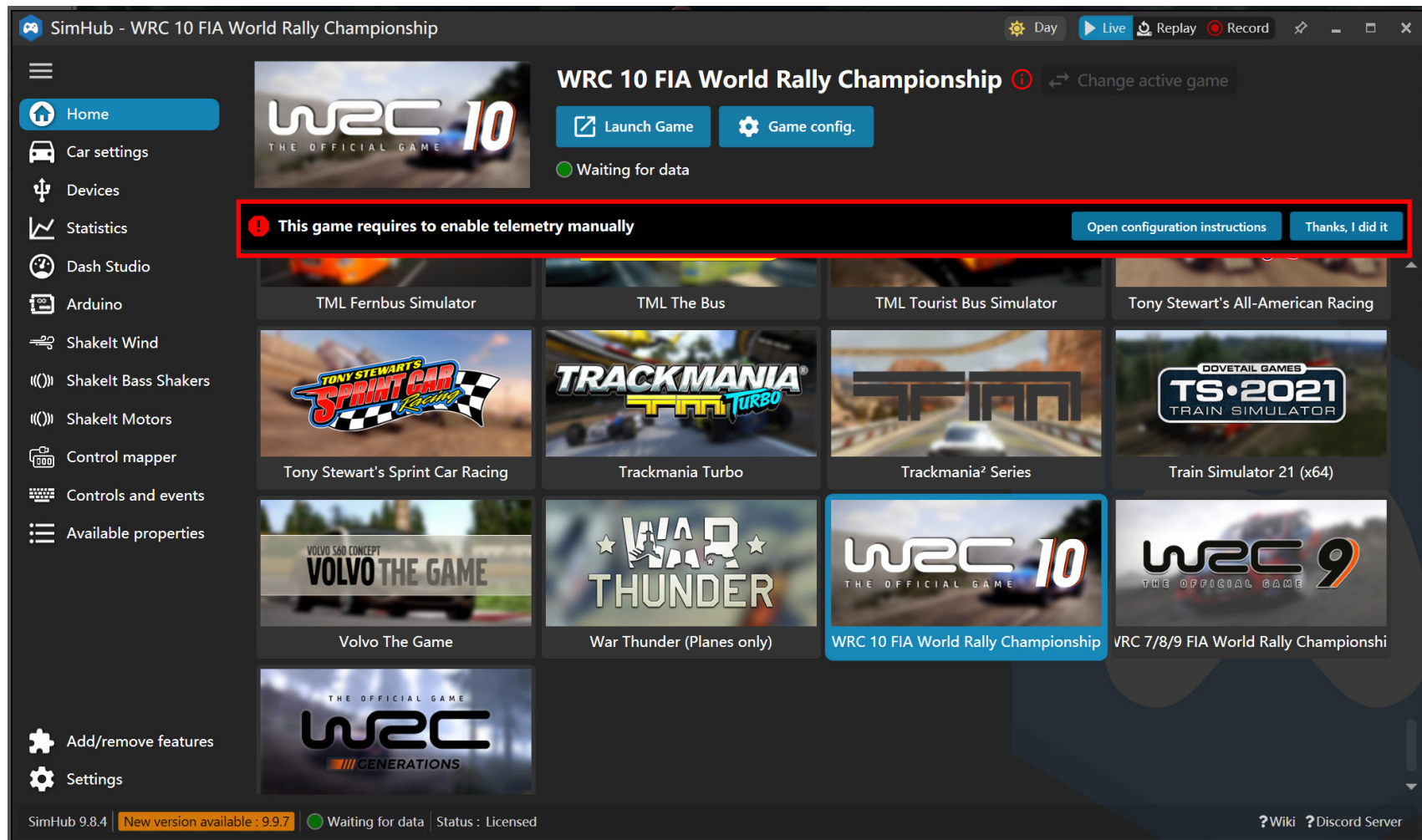
ON/OFF setting to determine if this channel is working
The values below represent the vibration intensity of this effect

Step 5

Simhub and the game require communication association



- The game needs to be associated with Simhub, Without being associated with Simhub, it is impossible to obtain telemetry data for the game, and the air outlet and Motors cannot be put into operation!



- For example, this prompt indicates that the game is not associated with SIMHUB and needs to be associated first!
Without telemetry data, the motion sensing module cannot work!

Thank you for your purchase and support.
Wishing you a happy life!